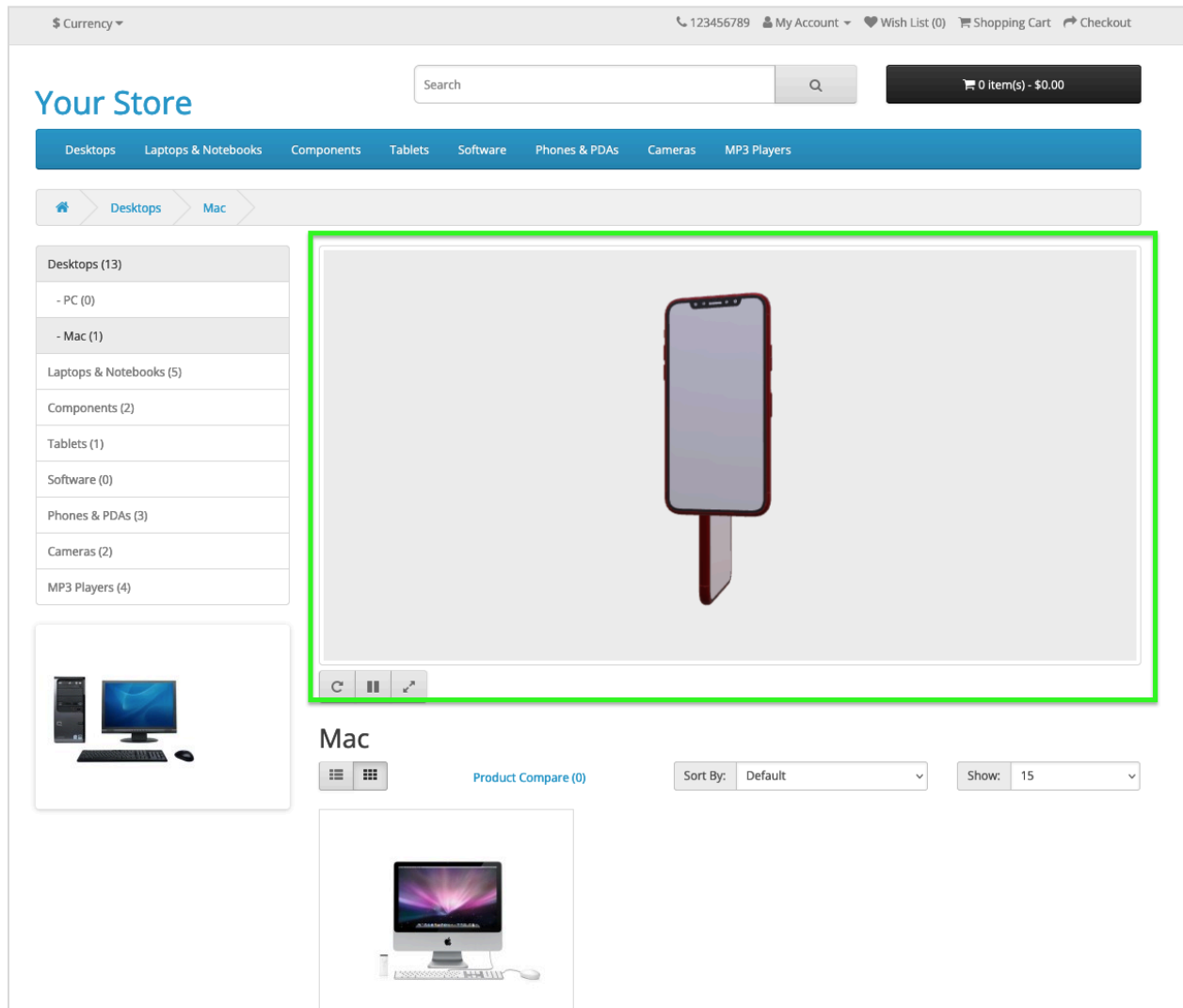


# Setup instructions

The extension gives you the ability to display your 3D models on category or product pages.

## Category Page

3D models can be categorized and the client can see the model for the entire category, for example:

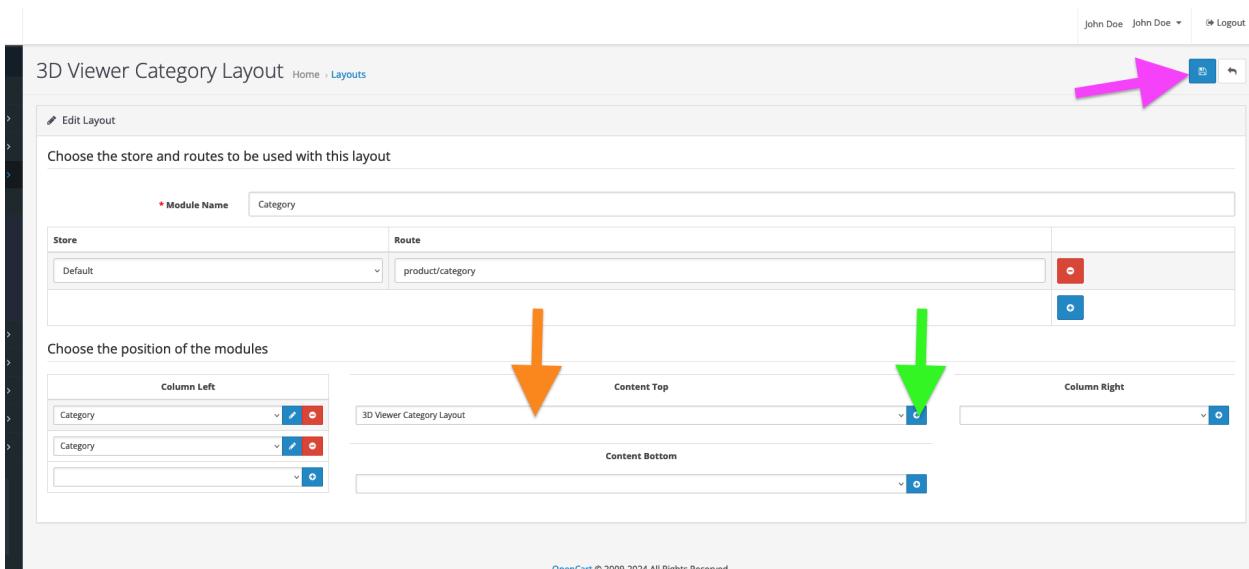


## Configuration Category Layout:

1. Go to **Design > Layouts > Category** and click **Edit**



2. Select where you want to see the 3D model: **Column Left, Content Top, Content Bottom** or **Column Right**. For example - **Content Top**. After selection click the **Add Module** button and **Save**



## Configuration Category Model:

1. Go to the Extension List page: **Extensions > Modules**
2. Find **3D Viewer Category Layout** and **3D Viewer Category** modules and click the **Install** button (picture: red arrow)

Extensions Home > Extensions

Extension List

Choose the extension type

Modules (28) Filter

**Add Pay in 3\* before the holidays.** Add Pay Later

Pay in 3 cart sizes are 216% higher than standard PayPal transactions.\*

Modules

After you have installed and configured a module you can add it to a layout [here!](#)

Module Name	Status	Action
3D Viewer Category Layout	Disabled	
3D Viewer Product Layout	Disabled	
3d Viewer Category	Enabled	
3d Viewer Product	Enabled	
Account	Enabled	
Amazon Pay	Disabled	
Banner	Disabled	

3. Enable the **3D Viewer Category Layout** and **3D Viewer Category** extension: click **Edit** button (picture: red arrow)

Extensions Home > Extensions

Extension List

Choose the extension type

Modules (28) Filter

**Add Pay in 3\* before the holidays.** Add Pay Later

Pay in 3 cart sizes are 216% higher than standard PayPal transactions.\*

Modules

Success: You have modified modules!

After you have installed and configured a module you can add it to a layout [here!](#)

Module Name	Status	Action
3D Viewer Category Layout	Disabled	
3D Viewer Product Layout	Disabled	
3d Viewer Category	Enabled	
3d Viewer Product	Enabled	
Account	Enabled	
Amazon Pay	Disabled	

4. Change the status to **Enabled** and click **Save**:

opencart

John Doe John Doe Logout

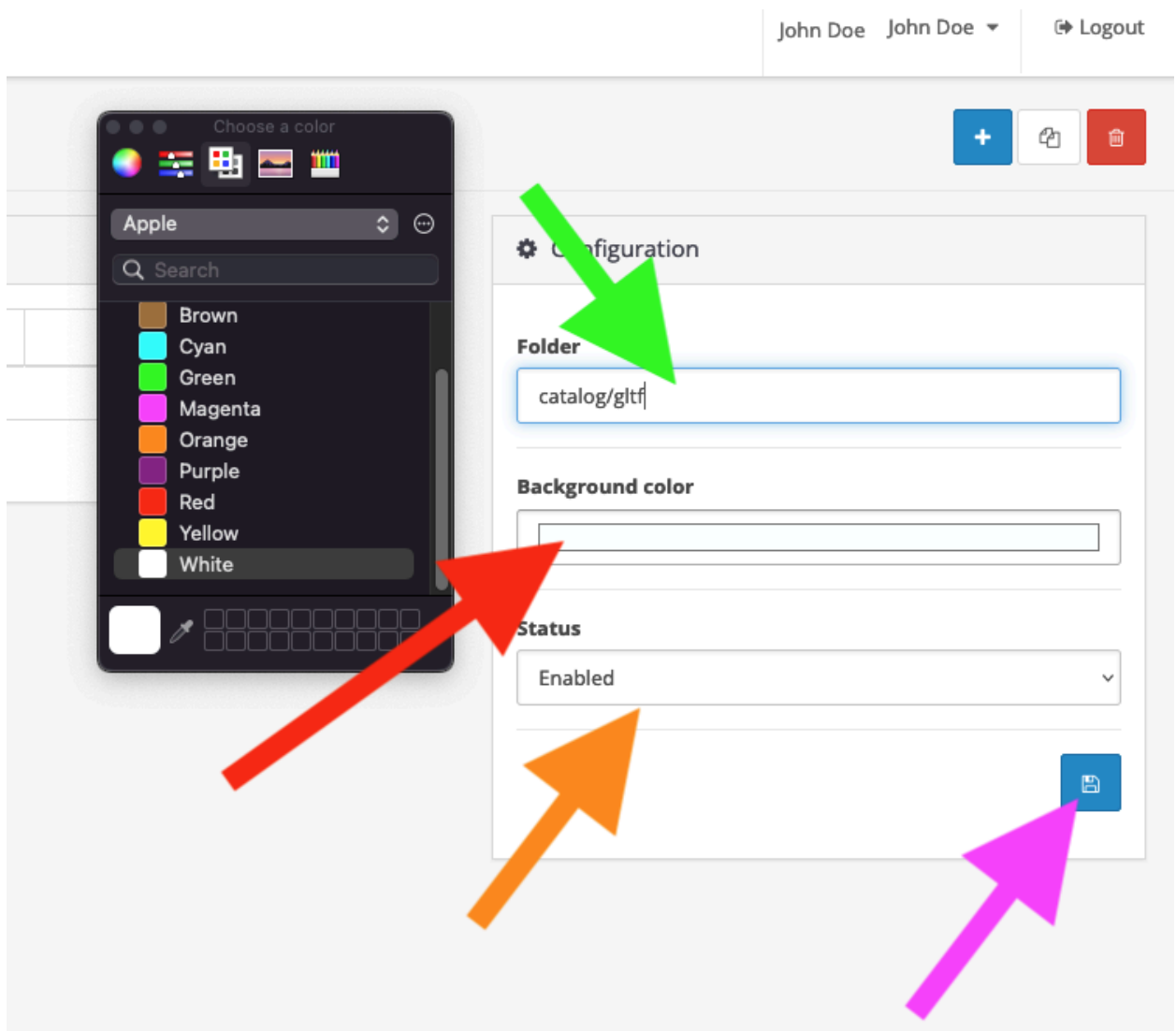
3D Viewer Category Layout Home > Extensions > 3D Viewer Category Layout

Edit 3D Viewer Category Layout Module

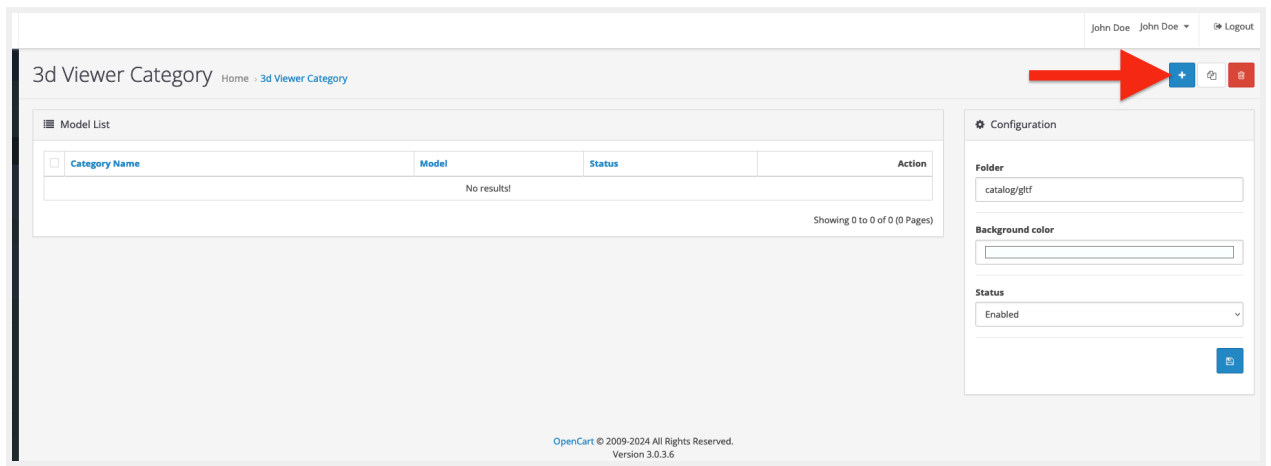
Status **Enabled** Disabled

OpenCart © 2009-2024 All Rights Reserved. Version 3.0.3.6

5. Go to the **3d Viewer Category** module. There are you can see a list of models and configuration.
6. Configuration contains: Folder, Background color and Status.
  - a. Folder - path to the folder with 3D models. For example - catalog/gltf. So the extension tries to find the model in the **DIR\_IMAGE**/catalog/gltf folder. *Note: **DIR\_IMAGE** can be found in config.php*
  - b. Background color - this is the background color of the 3D viewer.
  - c. Status - turn on/off the module. (see picture below)

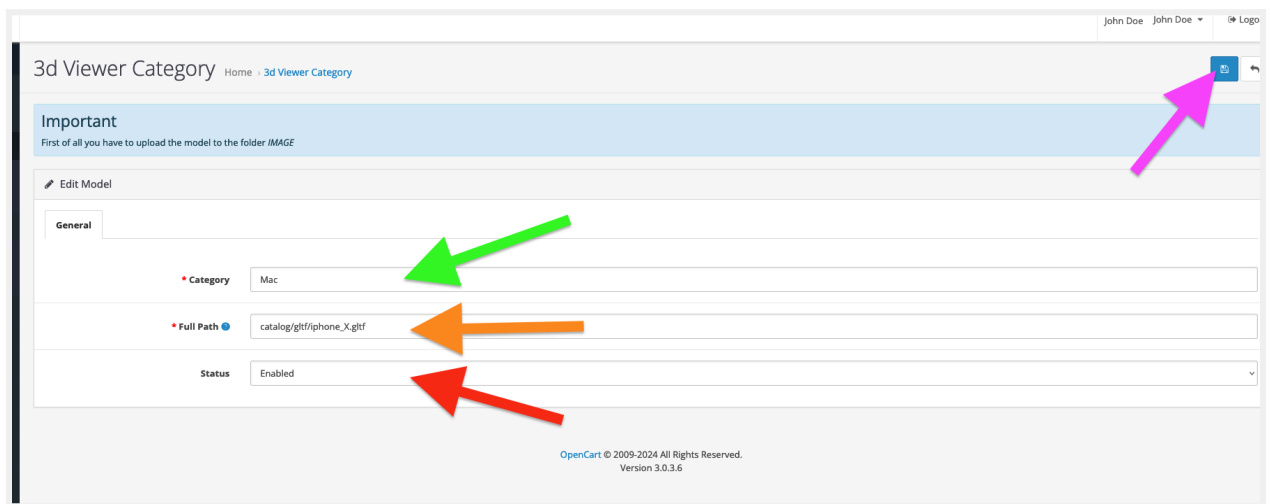


7. Click the **Add New** button:



8. This page contains the fields:

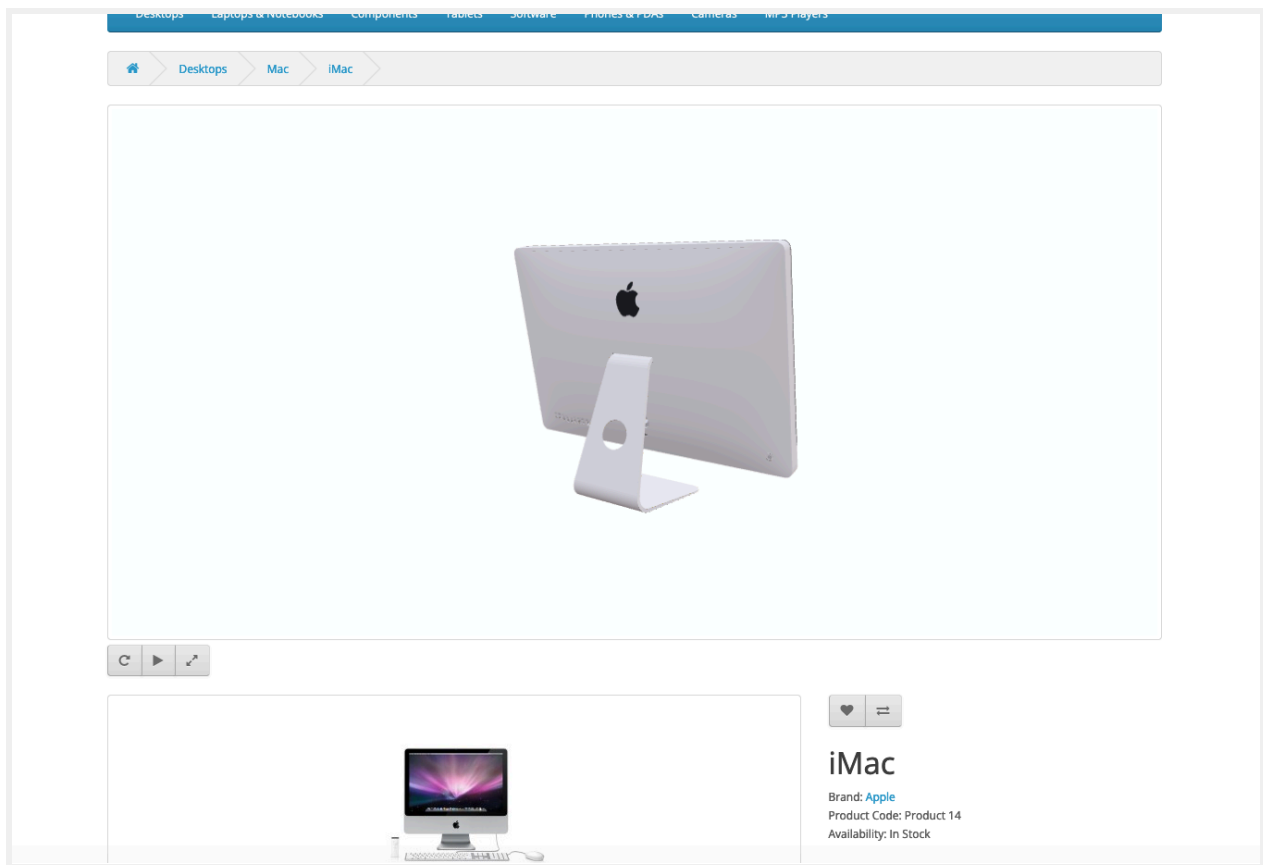
- a. Category - enter or select category
- b. Full Path - path to your model, for example - catalog/gltf/iphone\_X.gltf. So the extension tries to find the model in the **DIR\_IMAGE**/catalog/gltf/iphone\_X.gltf.  
*Note: **DIR\_IMAGE** can be found in config.php*
- c. Status - turn on/off the model. (see picture below)



Done! Please check your model on the category page.

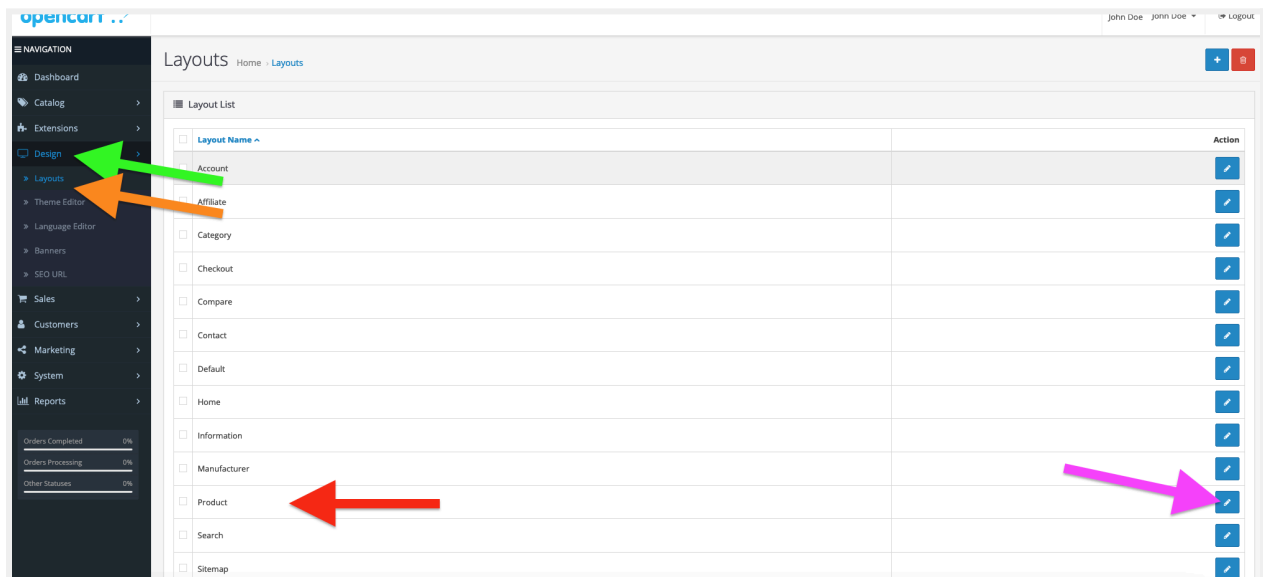
## Product Page

3D models can be assigned to a specific product, for example:

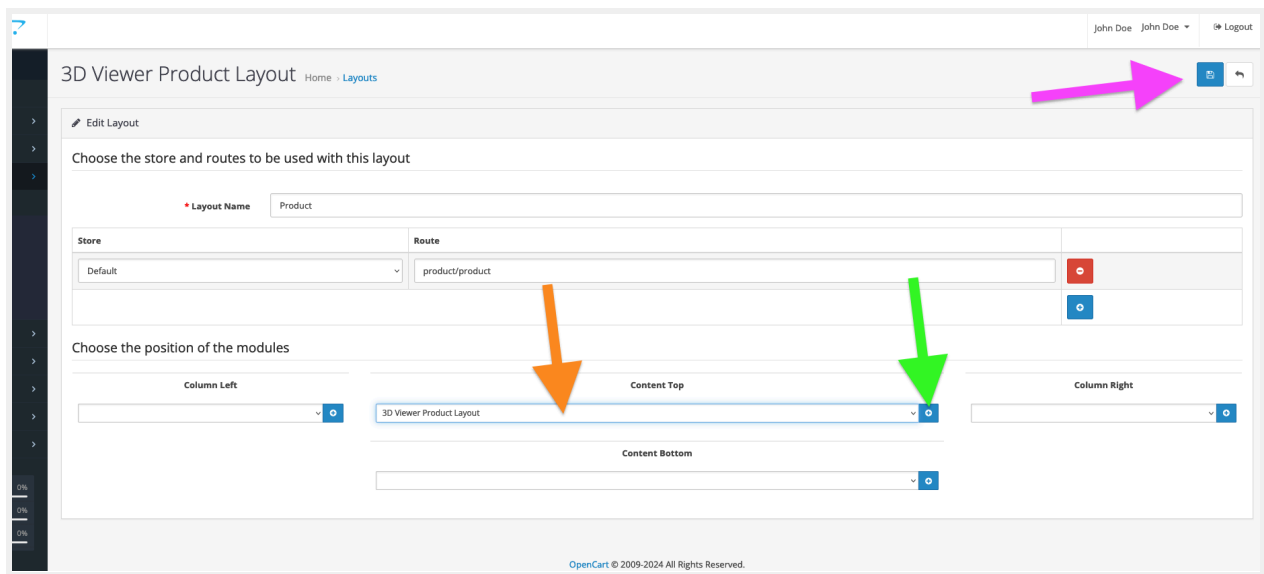


## Configuration Product Layout:

3. Go to **Design > Layouts > Product** and click **Edit**

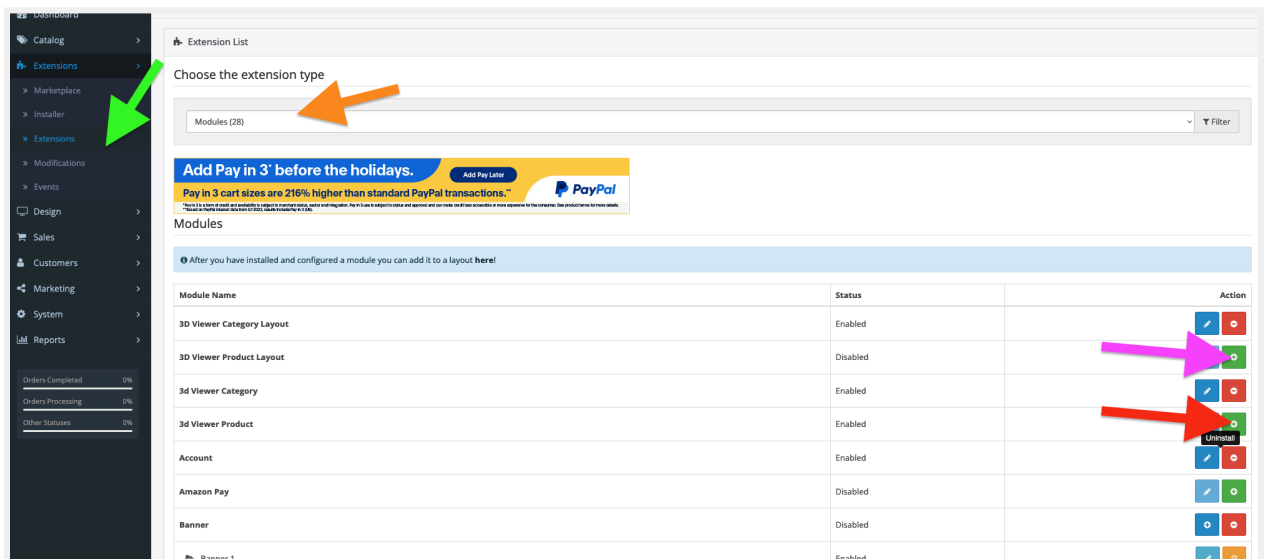


4. Select where you want to see the 3D model: **Column Left**, **Content Top**, **Content Bottom** or **Column Right**. For example - **Content Top**. After selection click the **Add Module** button and **Save**



## Configuration Product Model:

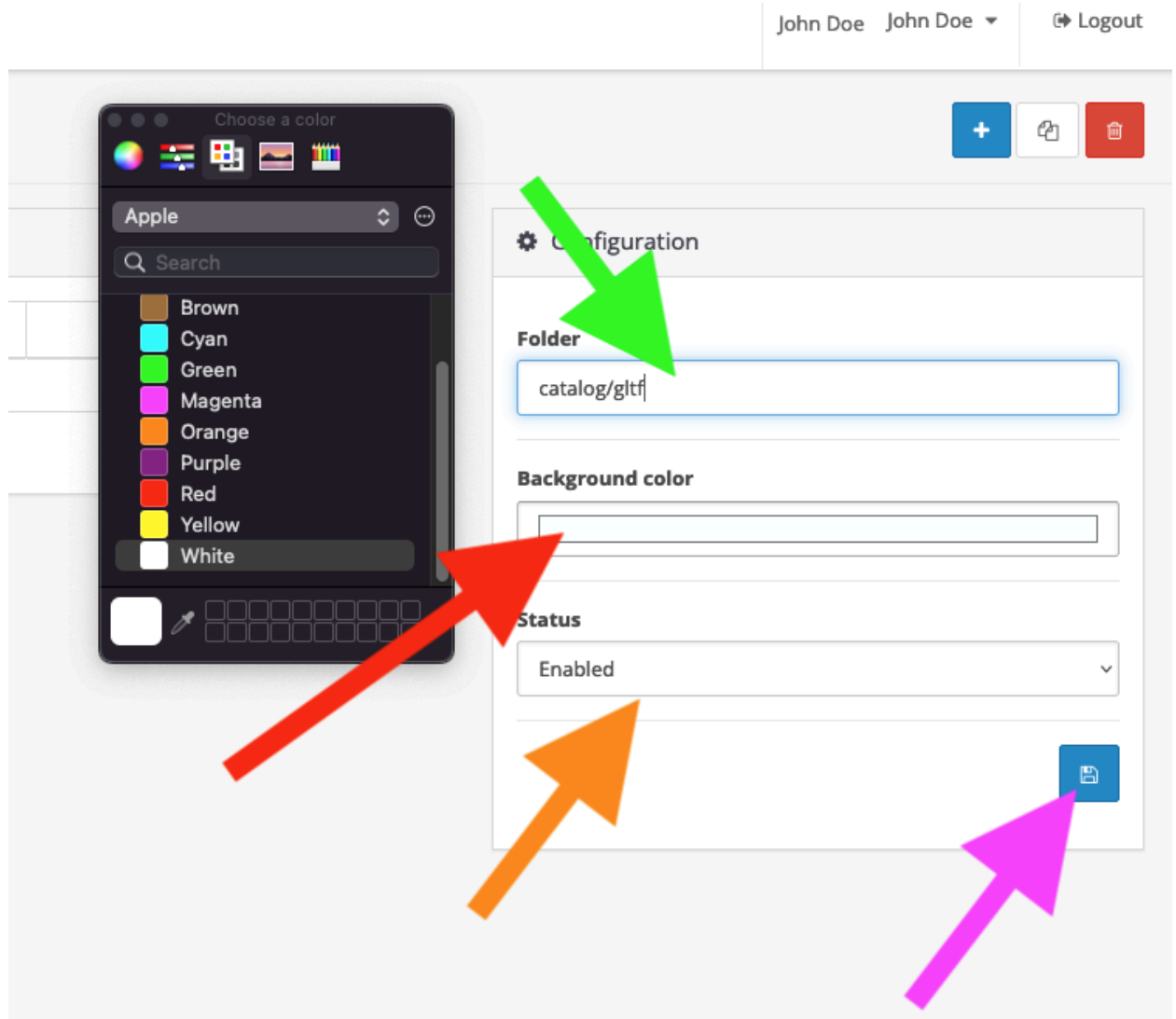
9. Go to the Extension List page: **Extensions > Modules**
10. Find **3D Viewer Product Layout** and **3D Viewer Product** modules and click the **Install** button (picture: red arrow)



11. Enable the **3D Viewer Product Layout** and **3D Viewer Product** extension: click **Edit** button
12. Change the status to **Enabled** and click **Save**
13. Go to the **3d Viewer Product** module. There are you can see a list of models and configuration.

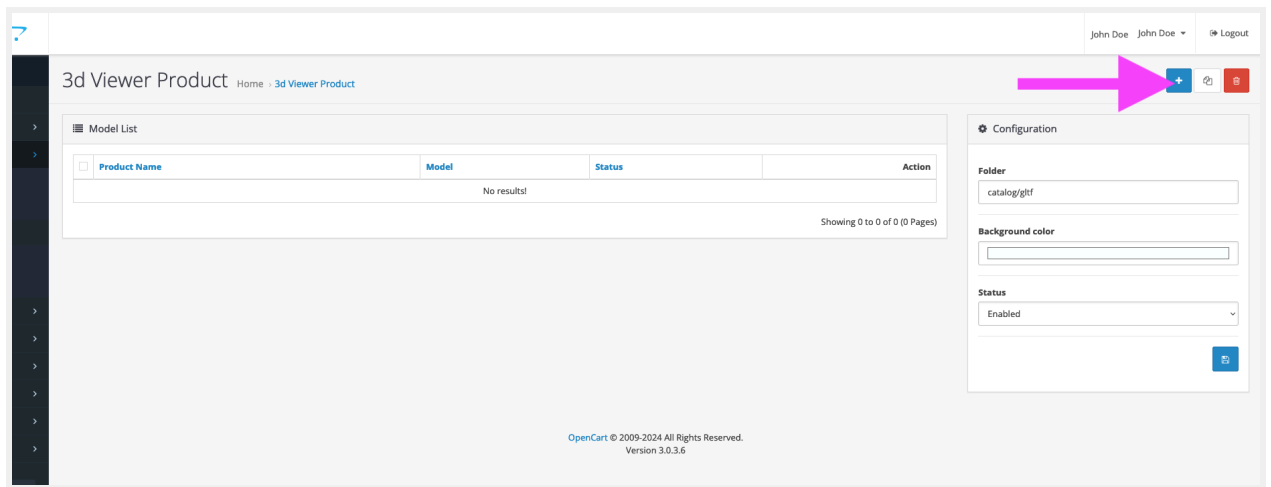
14. Configuration contains: Folder, Background color and Status.

- a. Folder - path to the folder with 3D models. For example - catalog/gltf. So the extension tries to find the model in the **DIR\_IMAGE**/catalog/gltf folder. *Note: **DIR\_IMAGE** can be found in config.php*
- b. Background color - this is the background color of the 3D viewer.
- c. Status - turn on/off the module. (see picture below)



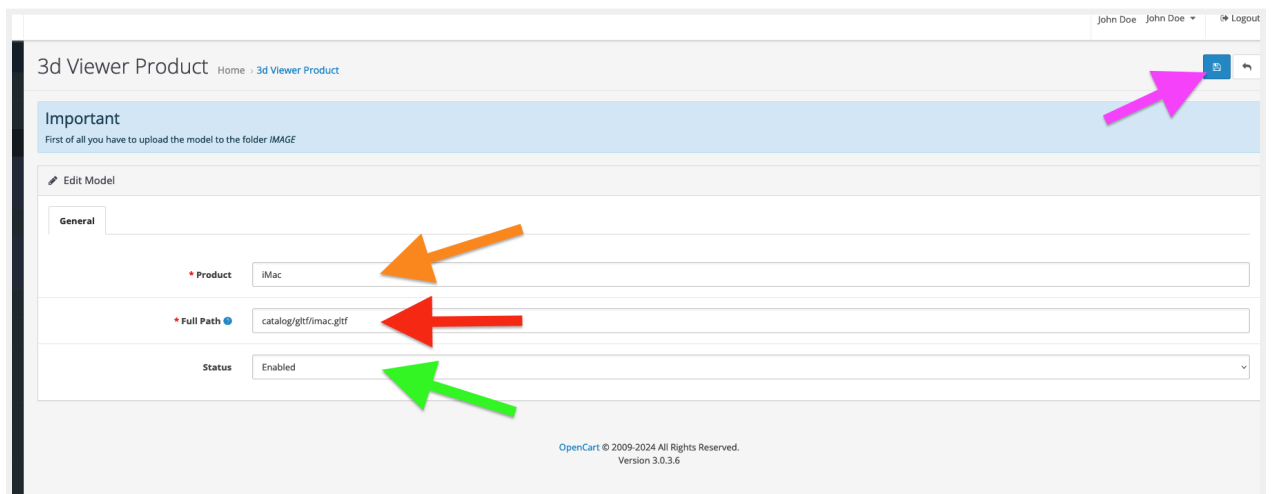
15. Click the **Add New** button:





16. This page contains the fields:

- Product - enter or select category
- Full Path - path to your model, for example - catalog/gltf/imac.gltf. So the extension tries to find the model in the **DIR\_IMAGE/catalog/gltf/imac.gltf**. *Note: **DIR\_IMAGE** can be found in config.php*
- Status - turn on/off the model. (see picture below)



Done! Please check your model on the product page.